

Bridlegate Lots 443 & 444



4.04 Level Acres in beautiful **Bridlegate Ranch**. This property backs up to the riding and hiking trail, and it's just down the trail from the equestrian center and arena. Build your custom home on this expansive acreage, there's a 2200 sq. ft. min. There's plenty of room to build your home and include a barn, shop, or pool in your building plans. One horse per two acres. The utilities are run underground, including fiber internet lines. There are Hill Country views everywhere you look. Bridlegate Ranch offers its property owners a sense of community and great amenities, which include the two historical original ranch houses which have become the Bridlegate Ranch amenity centers. Both have sparkling pools and overnight facilities. There's also a workout room, tennis courts, equine facilities, hiking, and riding trail, AND a private 5-acre Medina River Park includes river access for fishing and kayaking. The park has picnic areas, frisbee golf, and a soccer field. Perfect for the whole family. **\$170,000.** (Lots can be sold separately for \$85,000. each)



Gail Stone Realty

334 Main Street | Bandera, TX | 830.796.4640

www.gailstonerealty.com

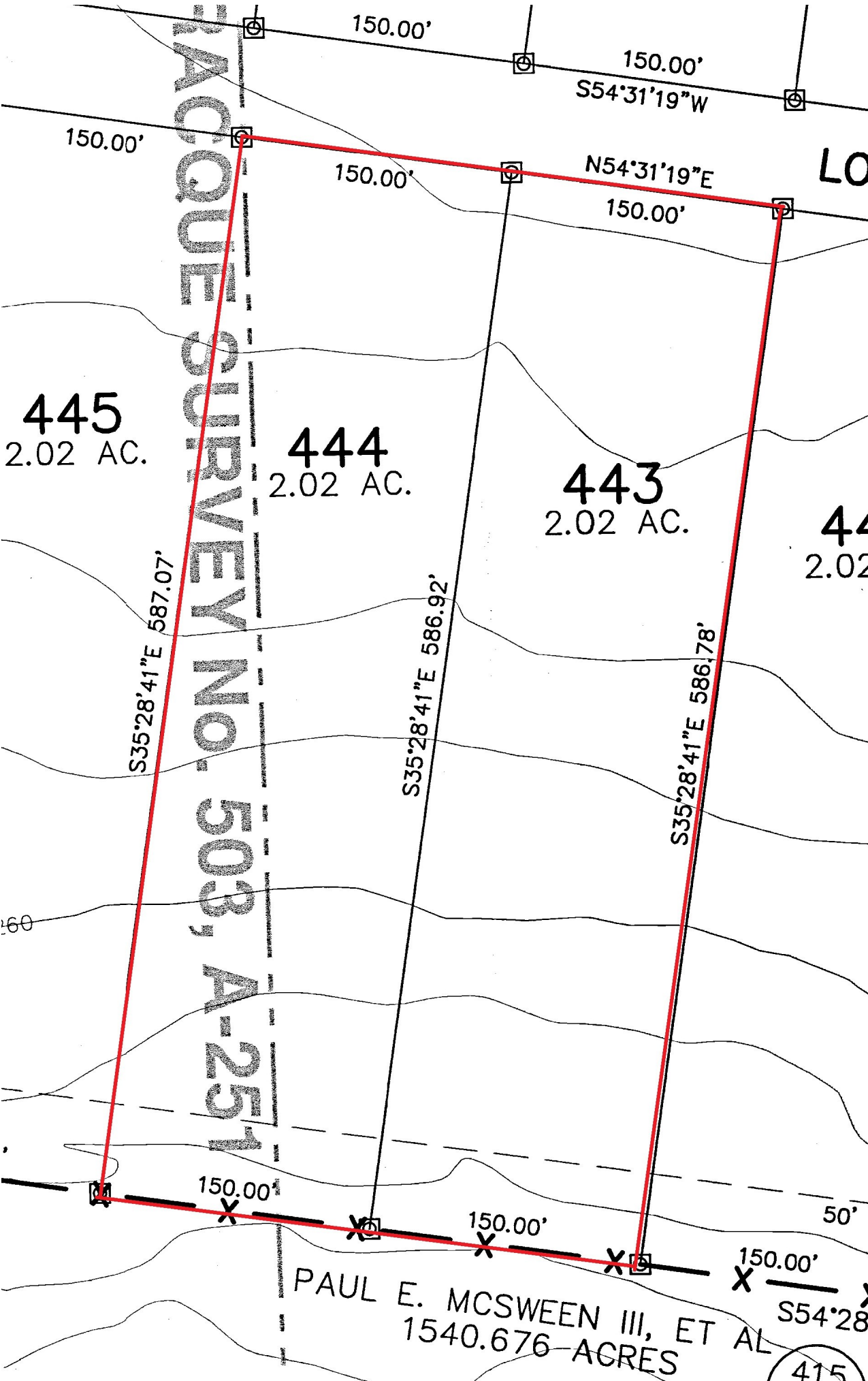


HORSESHOE FALLS

land id.

29.7032, -99.0007

JACQUE SURVEY NO. 503, A-251



445
2.02 AC.

444
2.02 AC.

443
2.02 AC.

44
2.02

S35°28'41"E 587.07'

S35°28'41"E 586.92'

S35°28'41"E 586.78'

150.00'

150.00'

S54°31'19"W

150.00'

150.00'

N54°31'19"E

150.00'

LO

150.00'

150.00'

150.00'

PAUL E. MCSWEEN III, ET AL
1540.676 ACRES

S54°28'

415